



Telemetry Series Underhook/Inline Load Link

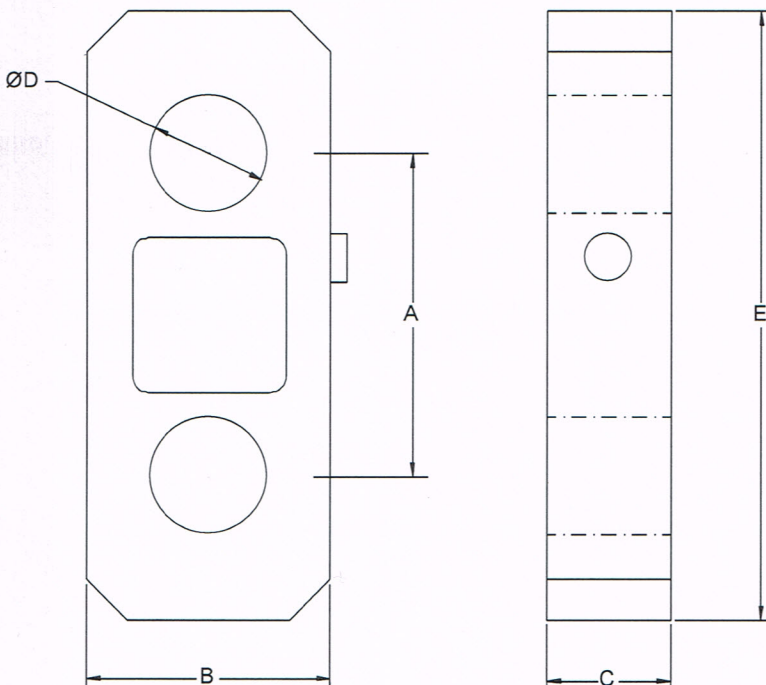
- Range 5 to 250 tonne
- For use with standard shackles
- Sealed to IP67
- Transmission Distance up to 800m
- 10 Step Linearisation
- Auto Power Down

Capacity (te)	A	B	C	DØ	E	Weight (Kg)
5	137	105	41.5	30	193	1.5
12	149	105	41.5	38	239	2.0
25	160	125	55	53	284	4.5
35	175	138	55	60	335	5.5
50	198	150	75	73	375	10.0
100	275	220	120	100	500	28.0
150	300	260	120	110	550	50.0
200	325	290	159	135	660	75.0
250	365	304	189	145	720	90.0

All dimensions in mm

Capacities	5-250	tonne
Radio Frequency	2.4	GHz
Accuracy	±0.05	% of reading
Input Resistance	800	Ω
Output Resistance	700	Ω
Compensated Temp. Range	-10 to +40	°C
Operating Temp. Range	-20 to +60	°C
Temp. Coefficient on Zero	<0.005	% FRO/°C
Temp Coefficient on Span	<0.003	% FRO/°C
Safe Overload	150	%
Ultimate Overload	400	%
Insulation	>500 @100Vdc	MΩ
Environmental Protection	IP67	
Battery Life	200 (up to)	Hrs

Specifications subject to change without notice



Features and Benefits

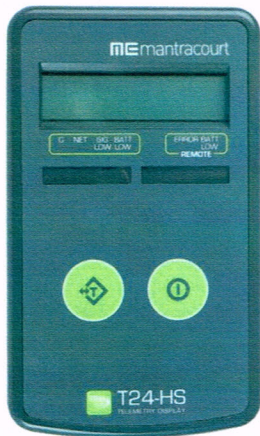
- Long battery life
- Error free data transmission
- Active repeater to extend transmission range
- Remote on/off
- Environmentally sealed
- Internal aerial
- Other capacities available on request



T24-HS

mantracourt

Wireless Handheld Display For Single Transmitter



Introduction

The T24-HS handheld displays data from any of the T24 wireless transmitter modules and forms part of the T24 modular telemetry system.

The data sent by transmitter modules can be utilised by multiple receivers such as displays, handheld readers, analogue outputs, relay modules and computer interfaces. Receivers support common industrial power supplies and are available in robust IP rated enclosures with internal antennas optimised to give outstanding coverage.

The T24-HS provides a point to point connection to a single transmitter. The transmitter can be woken and sent to sleep as the handheld is turned on or off. Two AA batteries power the handheld which has been designed for low power operation.

The T24 Toolkit software offers a fast and simple way to configure the display format, unit conversion, zero adjustment and transmitter selection.

Product Features

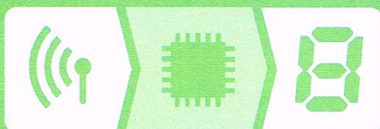
- Simple operation
- Connection to single transmitter module
- Tare function
- Auto shutdown
- Rugged construction

T24 System Overview



T24 Wireless Telemetry Sensor System is a modular wireless solution for industrial sensor applications.

High accuracy, high quality measurement is interfaced with simple yet powerful configuration and monitoring software.



Specifications

Power Supply

Power supply voltage 2.5 to 3.6 Vdc

2 off AA 1.5V primary cells

Battery Life

Based on 2 Ah capacity batteries

Continuous operation 35 hours

Standby mode (powered off) 1.5 years

Radio

Radio type Licence exempt transceiver

Radio frequency 2.4 GHz

Transmit power 10 mW

Range Up to 800 m

Environmental

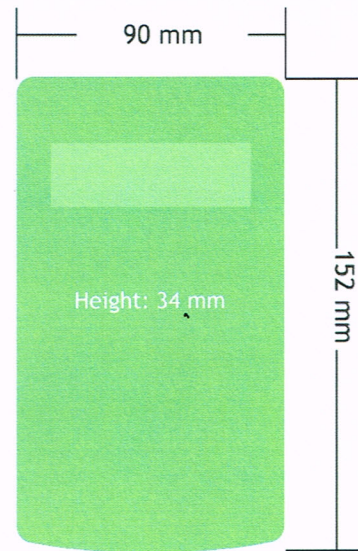
Operating temperature range -10 to 50 °C

Storage temperature range (no batteries) -40 to 85 °C

Maximum humidity 95% non-condensing

IP rating (ACM and ACMi) IP67/Nema4

Mechanical



Electrical



Order Codes

T24-HS

Wireless handheld display for single transmitter

TR100-CA

Black leather case with clear viewing window with shoulder strap