

STEALTH SUPER-12[®]

12- Strand UHMwPE Single Braid

Heat-Treated with Abrasion-Resistant Coating

APPLICATIONS

- Wire rope replacement
- Winch lines
- Towing
- Lifting

FEATURES

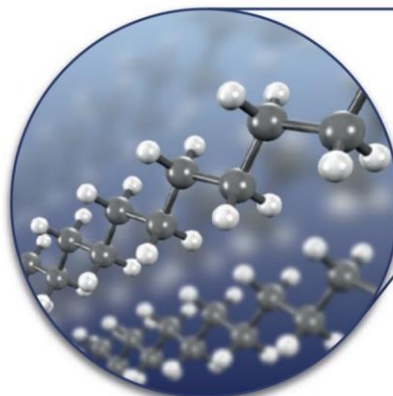
- Extreme strength-to-weight ratio
- 15 x stronger than steel
- Safer than wire (low recoil)
- Hydrophobic fibre (no water absorption)
- Floats
- Low creep
- Easy to splice
- Resistant to kinking
- Maintains high strength around tight-radius bends
- Exceptional UV and chemical resistance
- Abrasion-resistant coating reduces likelihood of snagging and provides superior winch drum grip

TECHNICAL

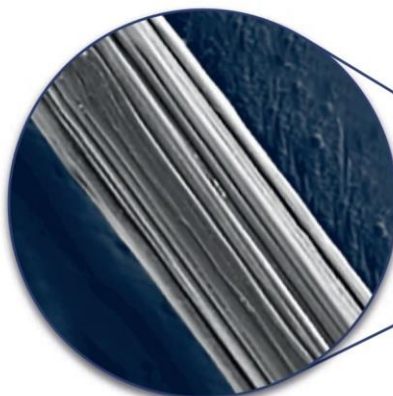
- Stealth Fibre[®] Ultra-high molecular weight polyethylene
- 32 cN/dtex tenacity
- 3.5% elongation at break
- 0.98 g/cm³ density

OPTIONS

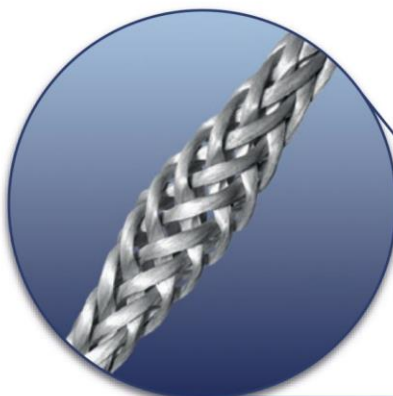
- Available in 3 constructions:
 - Single strand (1-9mm)
 - Double strand (10-60mm)
 - Braid-on-braid (64-105mm)
- Custom colours (silver-grey standard)
- Protective cover braid
- Larger diameters
- Spliced eyes
- Thimbles
- Proof loading with certificates



Simple Polymer with outstanding performance characteristics



Highly orientated fibres for increased strength



Braided construction allows for easy splicing



STEALTH SUPER-12[®]

12- Strand UHMwPE Single Braid

Heat-Treated with Abrasion-Resistant Coating

Dia. (mm)	Spliced Break Load (metric tonne)	Linear Break Load (metric tonne)	Dia. (mm)	Spliced Break Load (metric tonne)	Linear Break Load (metric tonne)
3	1.3	1.4	22	47.0	52.2
3.5	1.7	1.9	24	55.2	61.3
4	2.2	2.4	26	65.3	72.5
5	3.1	3.4	28	76.0	84.4
6	4.3	4.8	30	82.5	91.6
7	5.2	5.8	32	84.6	93.9
8	6.6	7.3	36	106.8	118.5
9	8.4	9.3	38	118.0	131.0
10	9.7	10.8	40	131.0	145.4
11	10.9	12.1	44	157.0	174.3
12	15.3	17.0	48	181.0	200.9
13	15.9	17.6	52	201.0	223.1
14	17.9	19.9	56	230.0	255.3
15	20.0	22.2	60	268.0	297.5
16	21.2	23.5	64	320.0	355.2
16.5	23.5	26.1	68	360.0	399.6
17	27.0	30.0	72	400.0	444.0
18	31.3	34.7	76	450.0	499.5
19	34.9	38.7	80	500.0	555.0
20	40.8	45.3	105	850.0	943.5